

_ PRESENTATION

ESBJERG OFFSHORE WIND CENTRE

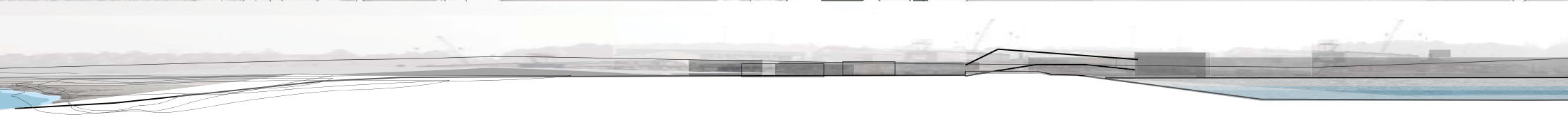
an investigation of the building landscape

_ NICOLA STEWART LAURSEN-SCHMIDT

CONTEXT

_ The site is at the centre of a transitional zone; wedged in between the naturally occurring landscape and the industrial harbour.

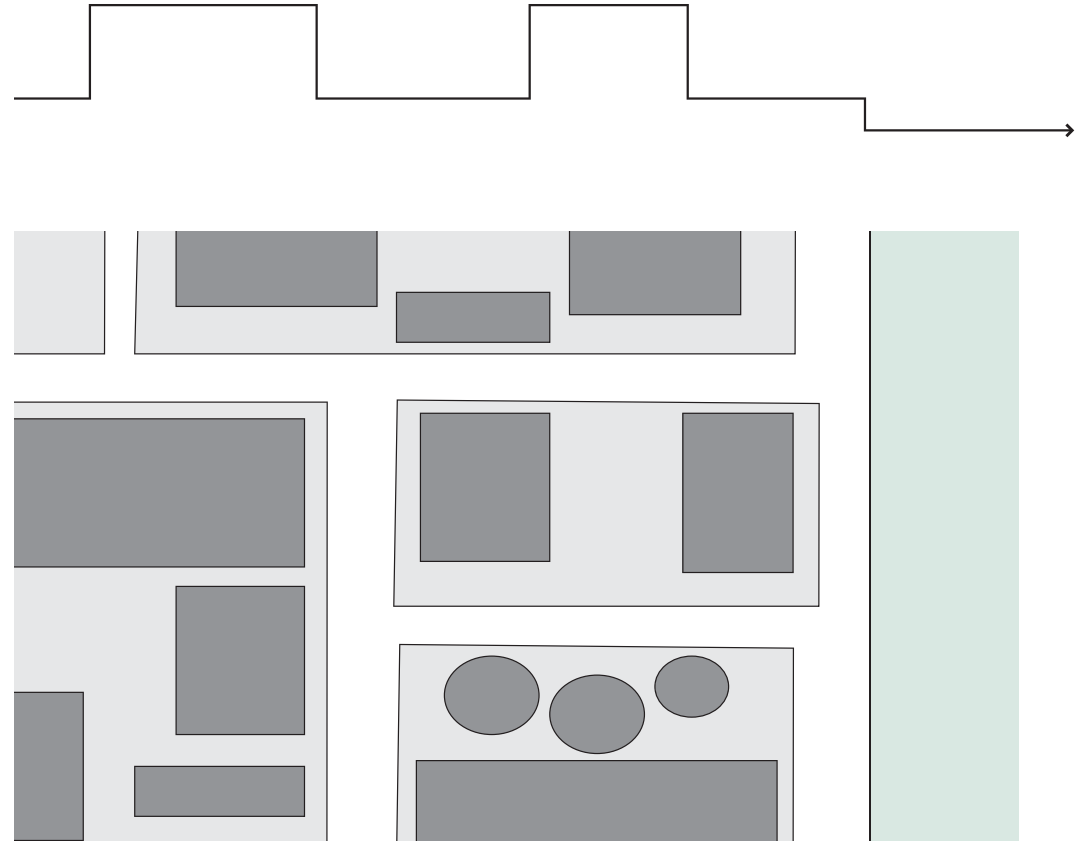
_ The slipway marks the only place in the harbour, where the meeting of water and land is a gradual one.



HARBOUR: LANDSCAPE OF PLANES

_ Both at eye-level and in plan, the harbour area is perceived as a system of orthogonal surfaces.

_ The large scale of the facades and open spaces, together with their blank appearance, makes them appear as a single orthogonal surface.



HARBOUR: THE PROBLEM OF SCALE



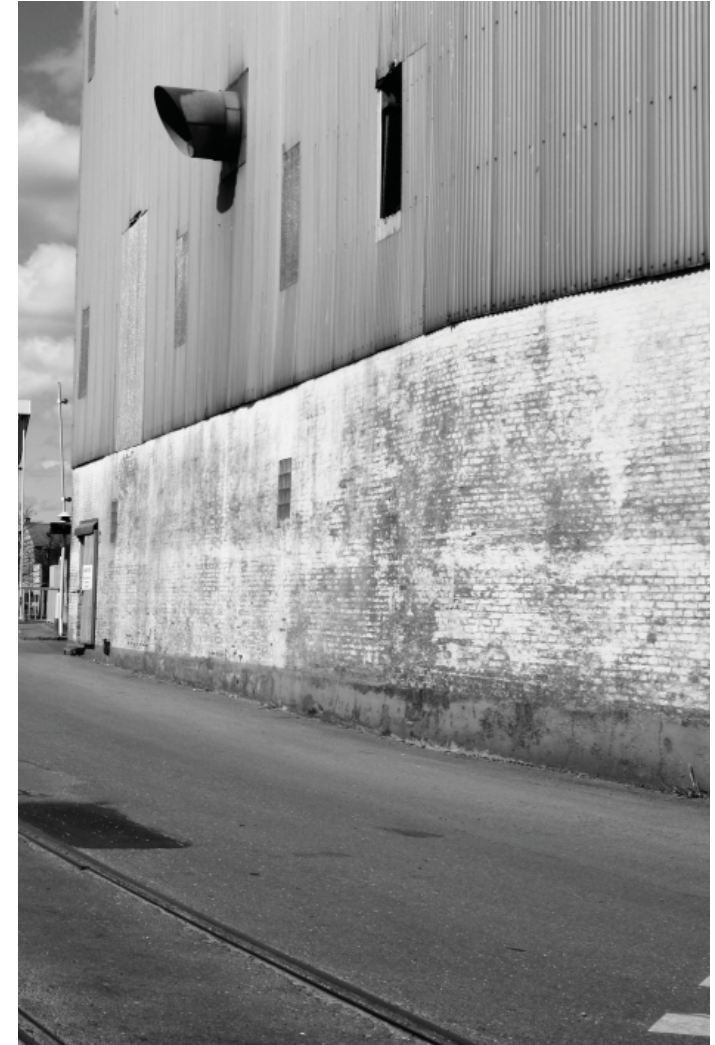
_LACK OF TRANSPARENCY:

The closed facades of the harbour buildings reveal nothing about the activities inside.



_STRANGE DETAILS:

The harbour is designed for machines. Mainly the details are mechanical installations; reveal nothing about a human presence.



_NO GESTURES

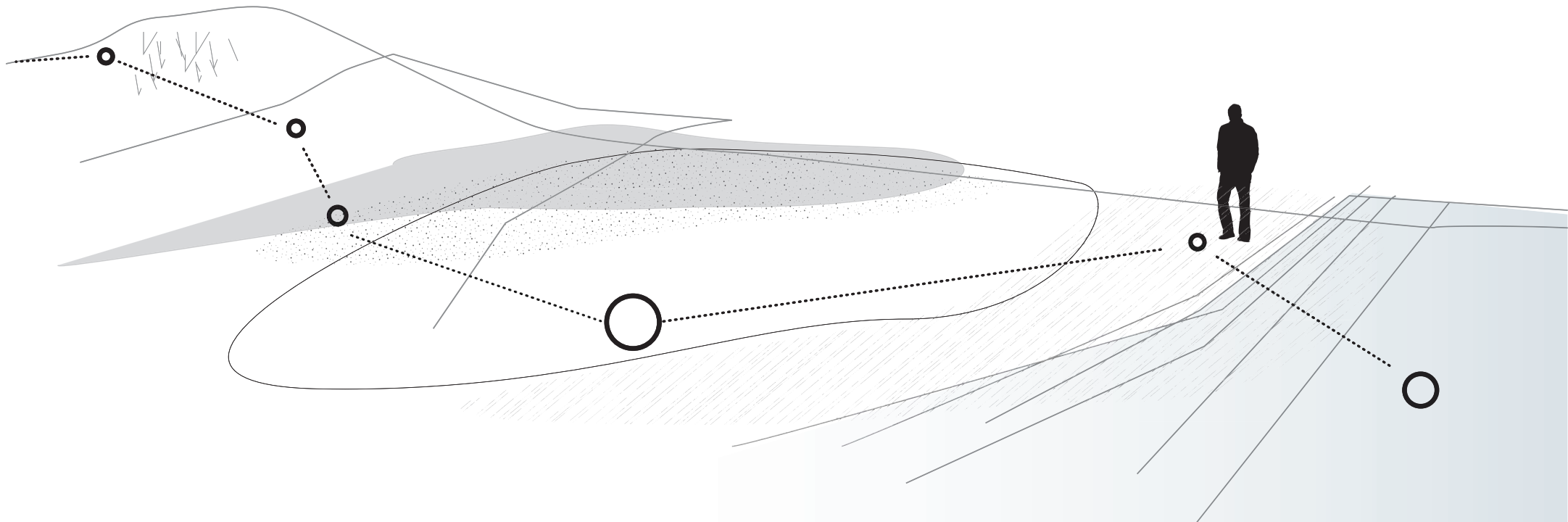
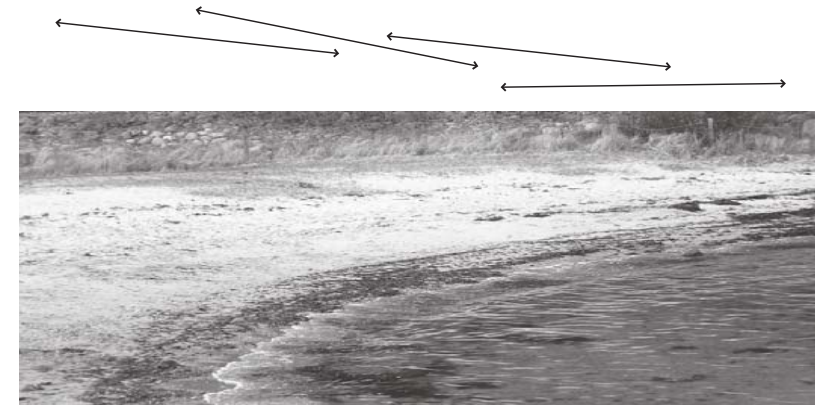
at a human level, making you feel welcome and comfortable in this area.

NATURE: LANDSCAPE OF PLANES

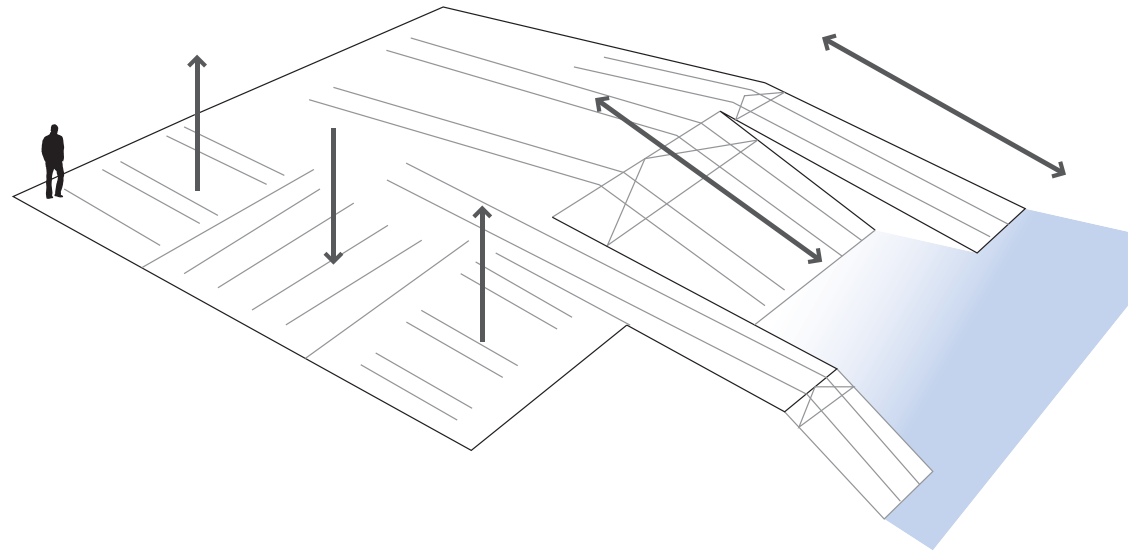
_ The natural landscape is made up of gradually overlapping surfaces.

_ The overlapping surfaces created overlapping spaces. You move freely in the landscape, hardly noticing the changes.

_ The notion of transitional spaces, overlapping and gradually changing, can be applied to building.



SITE: FUNCTIONAL SURFACE



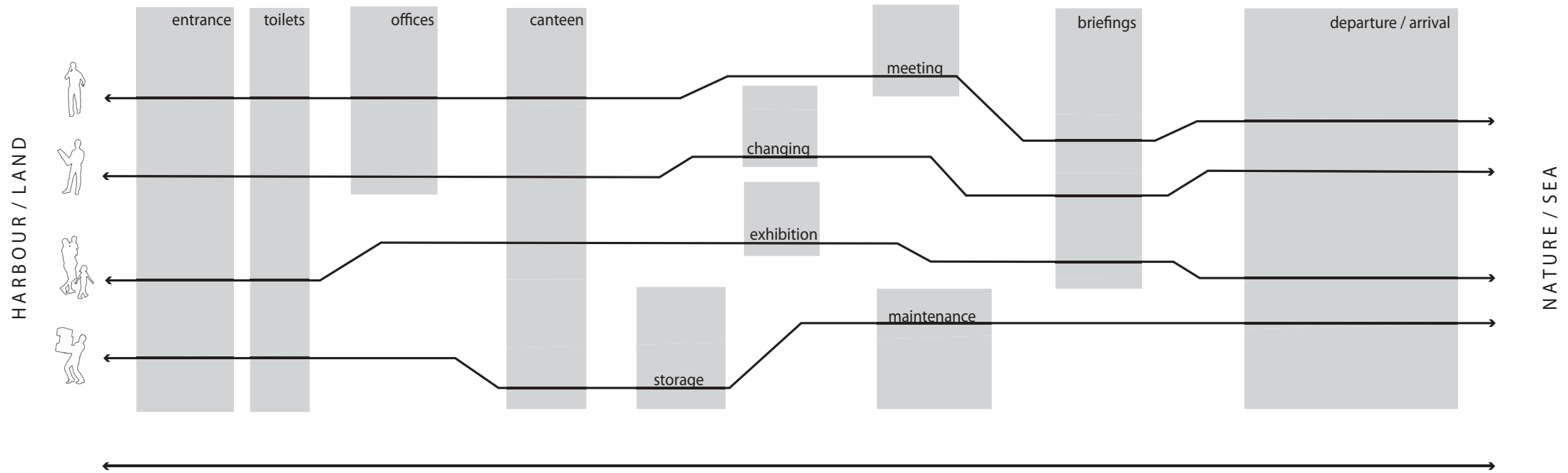
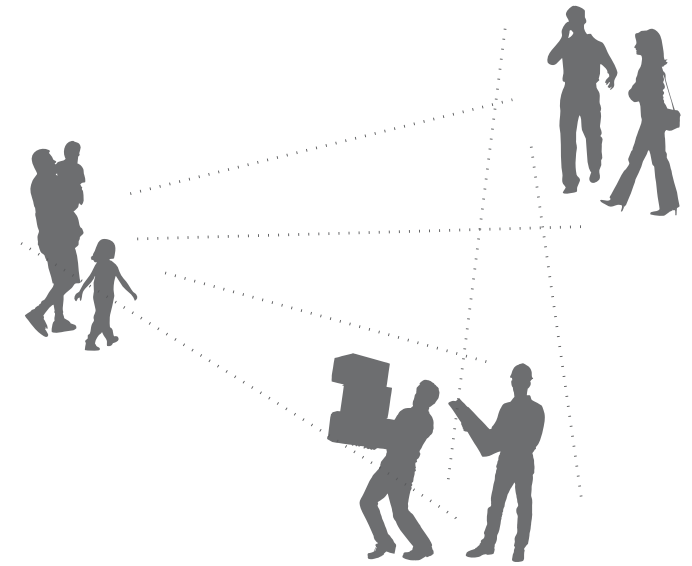
_ The surface landscape of the site has been designed purely on the basis of the functional requirements.

_ Like nature and the harbour, the site is read as a single surface landscape.

FUNCTIONAL BRIEF

_ The building is a transitional space, with the primary function of providing a direct connection from land to sea.

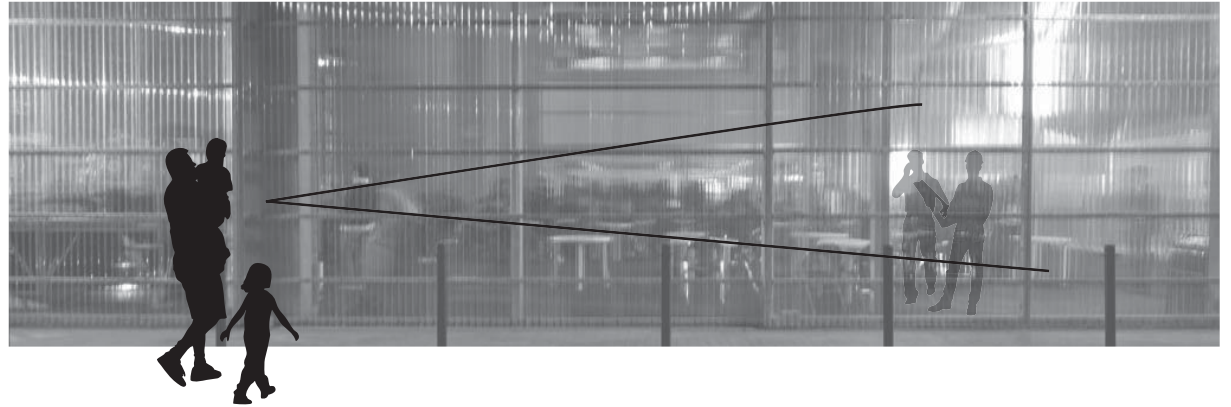
_ Different user groups share functions when possible; interaction is encouraged.



AMBITIONS

_ CHALLENGE HARBOUR TYPOLOGY

- _ by revealing more of the interior activities
- _ making gestures towards a human scale
- _ keeping true to the size of neighboring buildings.

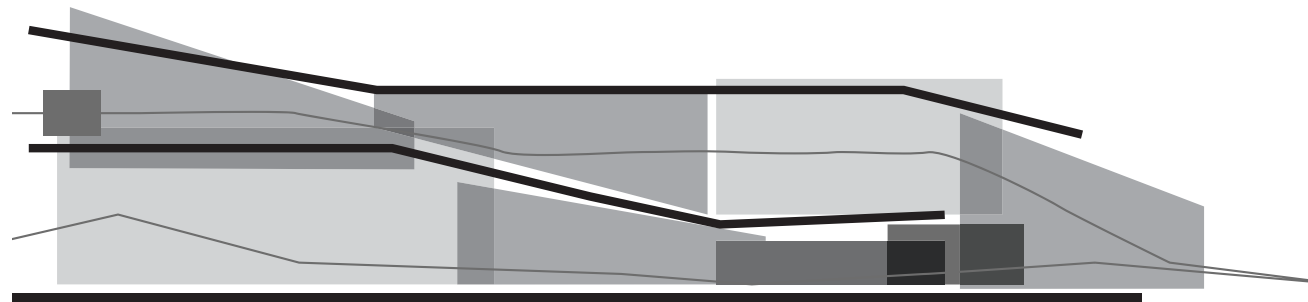


_ FACILITATE AND COMMUNICATE THE TRANSITIONAL NATURE OF THE SITE by continuing the narrative of the landscapes of context and site.



_ NATURAL PROGRESSION THROUGH SPACES

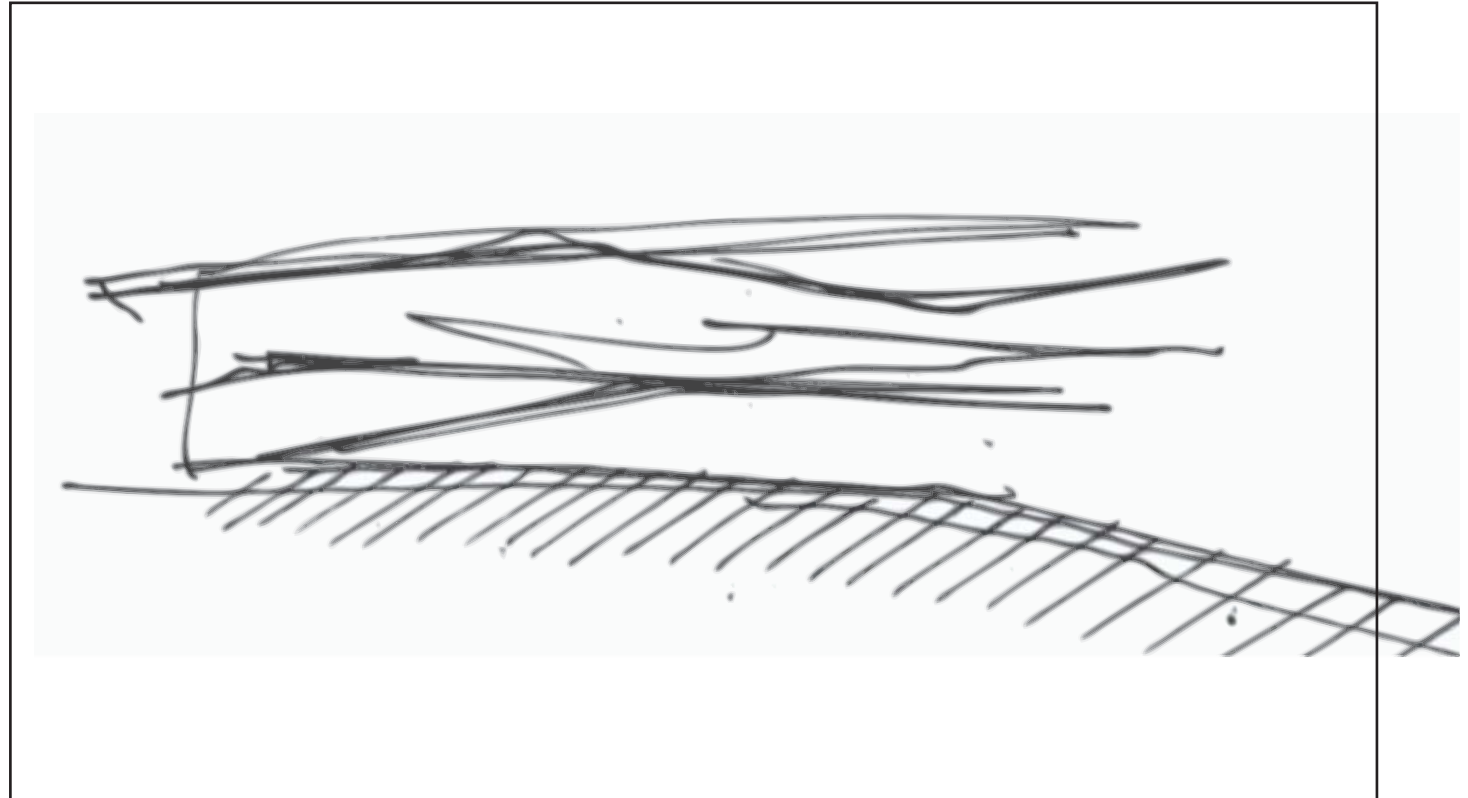
Ensuring a gradual transition through spaces of different sizes and scales: small cabins are naturally integrated as storage space.



CONCEPT

_ The concept for the building is to carry on the notion of the surface landscape; as found in the context and on site.

The spaces of the building will be formed by the interaction of surfaces, forming a building landscape.

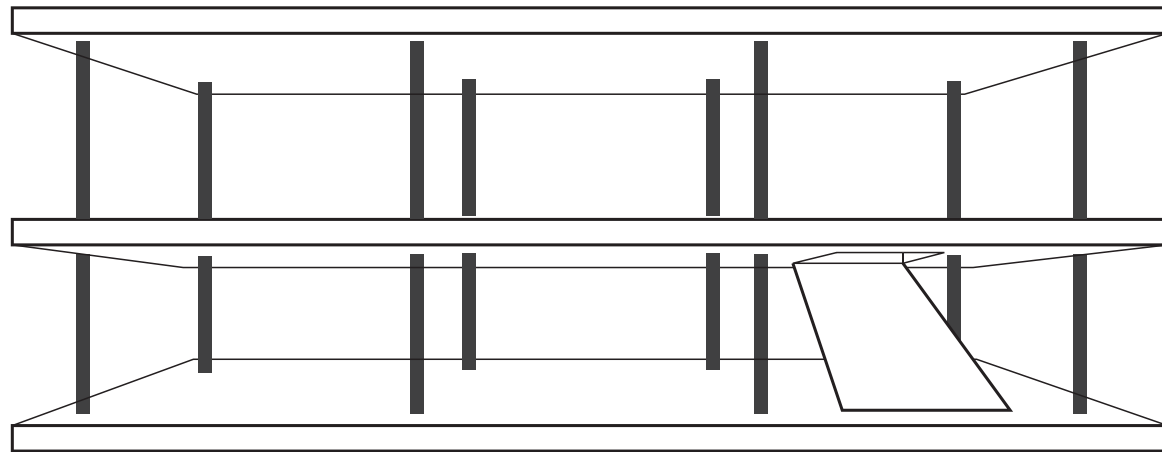


FORM PRINCIPLES

new LeCorbusier principles

01_ DOMINO HOUSE-PRINCIPLE

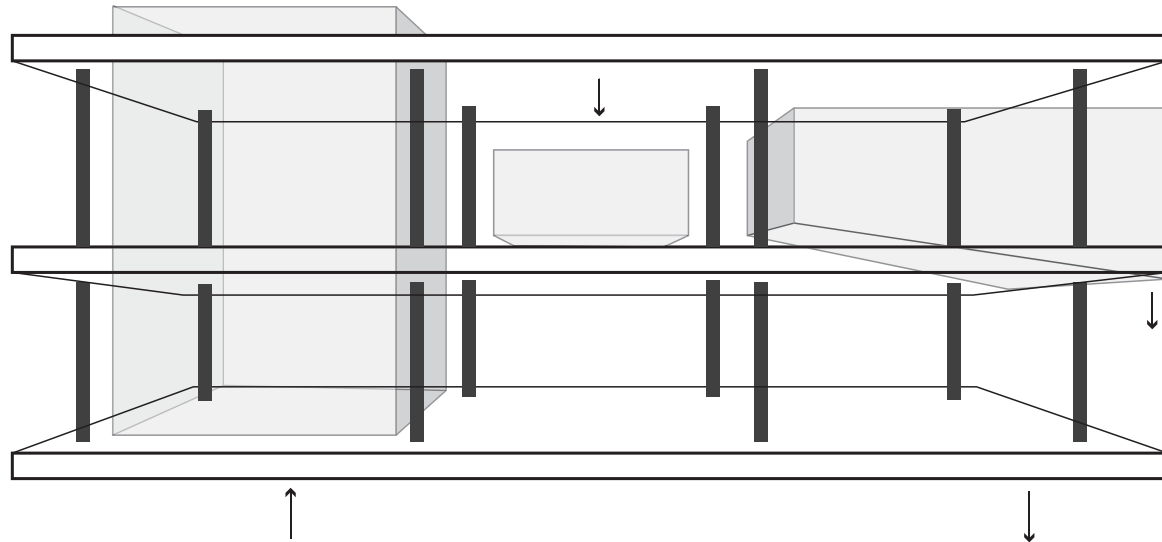
- _ Generic space
- _ Any function can be placed anywhere
- _ Flexible + multifunctional



FORM PRINCIPLES

02_ INTERFERING FUNCTIONS

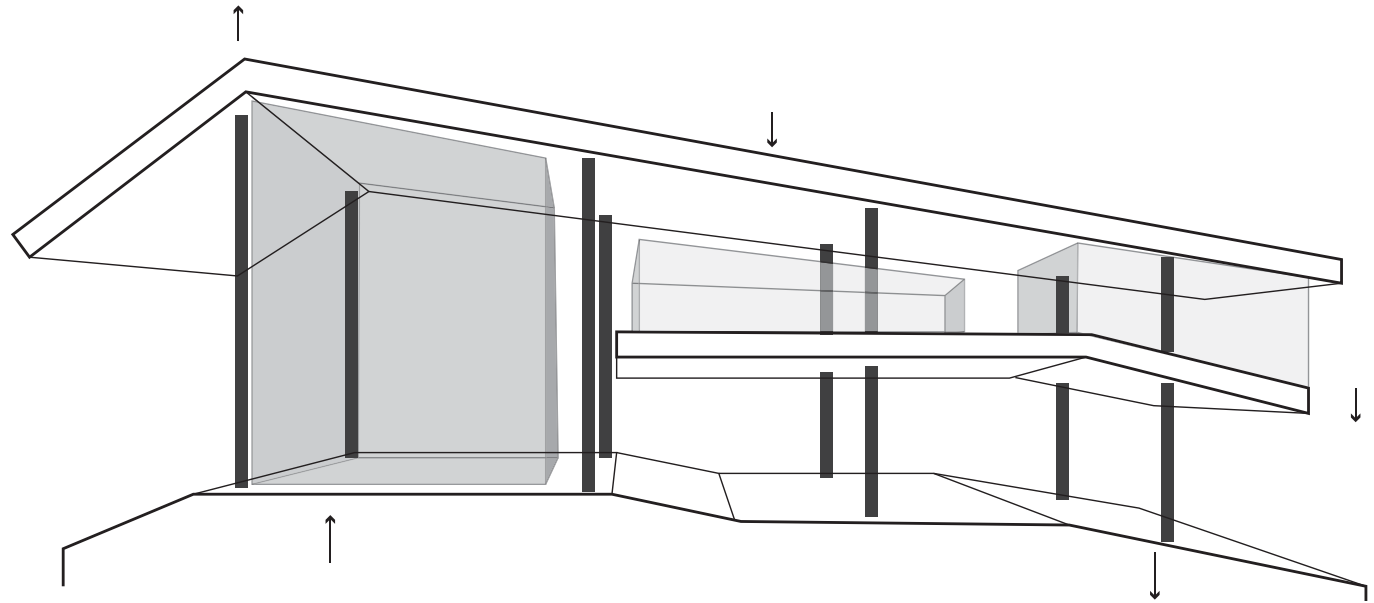
_ the functional/spacial/atmospheric requirements of certain spaces do not fit into generic structure.



FORM PRINCIPLES

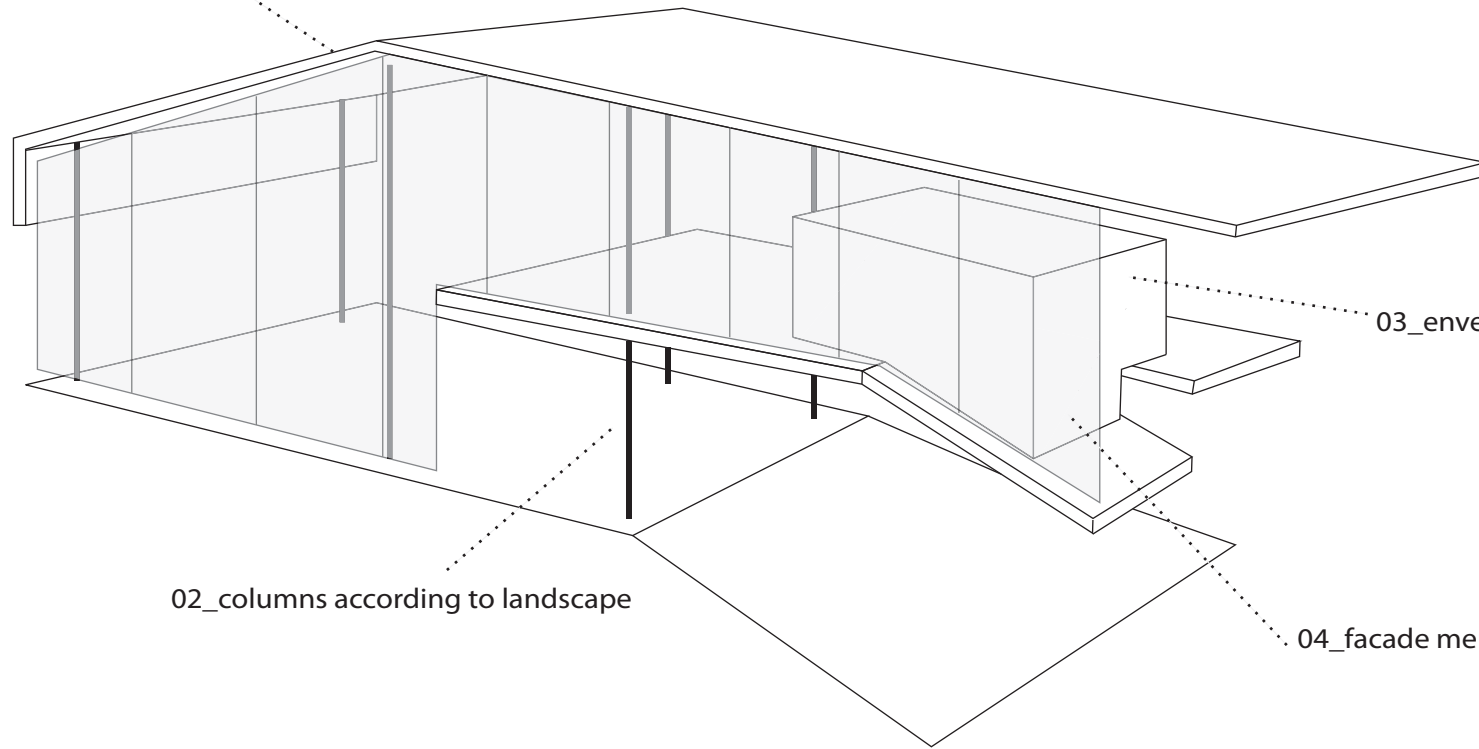
03_ BUILDING LANDSCAPE

- _ Specific spaces created
- _ Changing landscape
- _ Flexible + multifunctional
- _ Inspiring + challenging



HIERARCHY

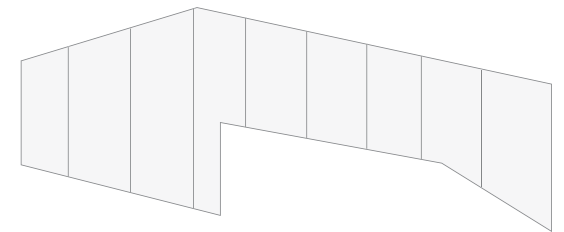
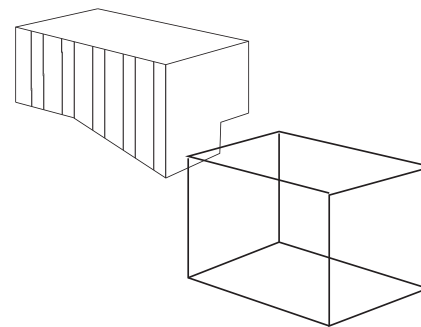
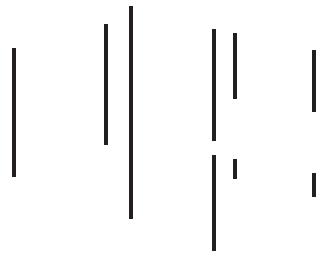
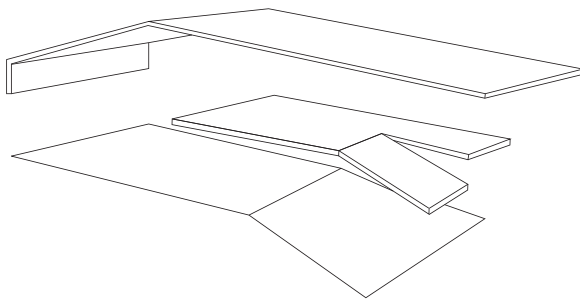
01_building landscape



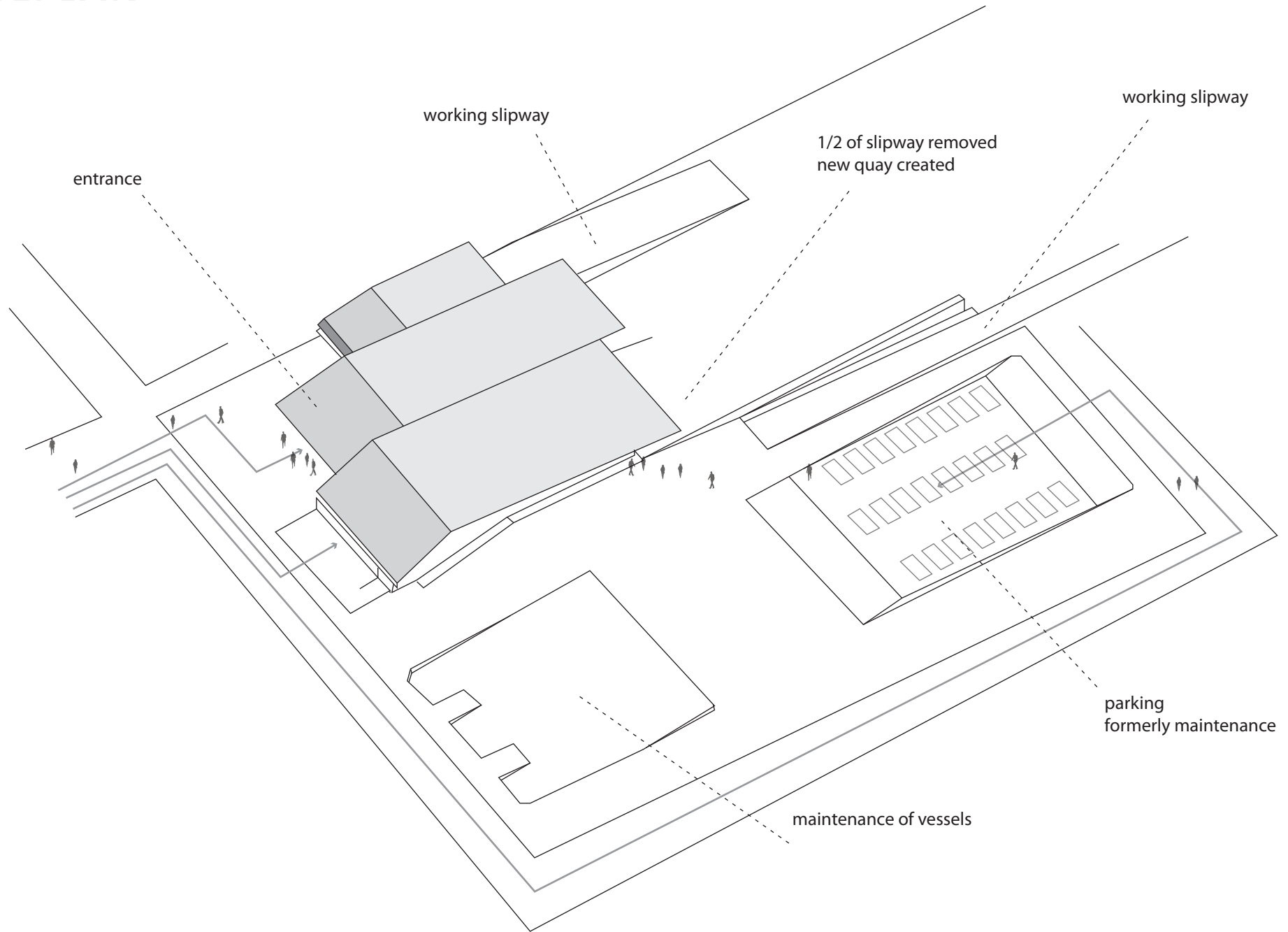
03_envelopes

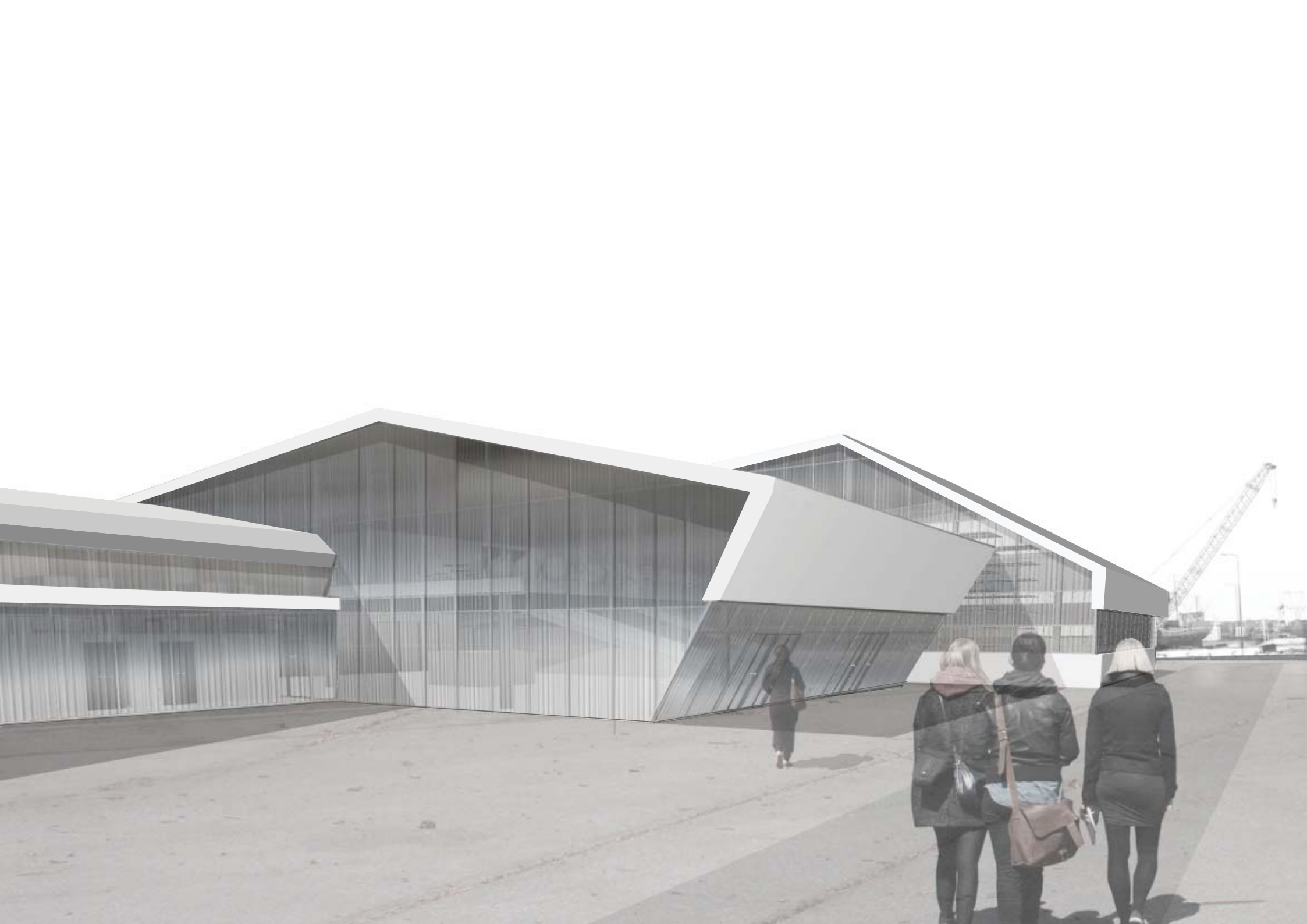
02_columns according to landscape

04_facade membrane



SITEPLAN



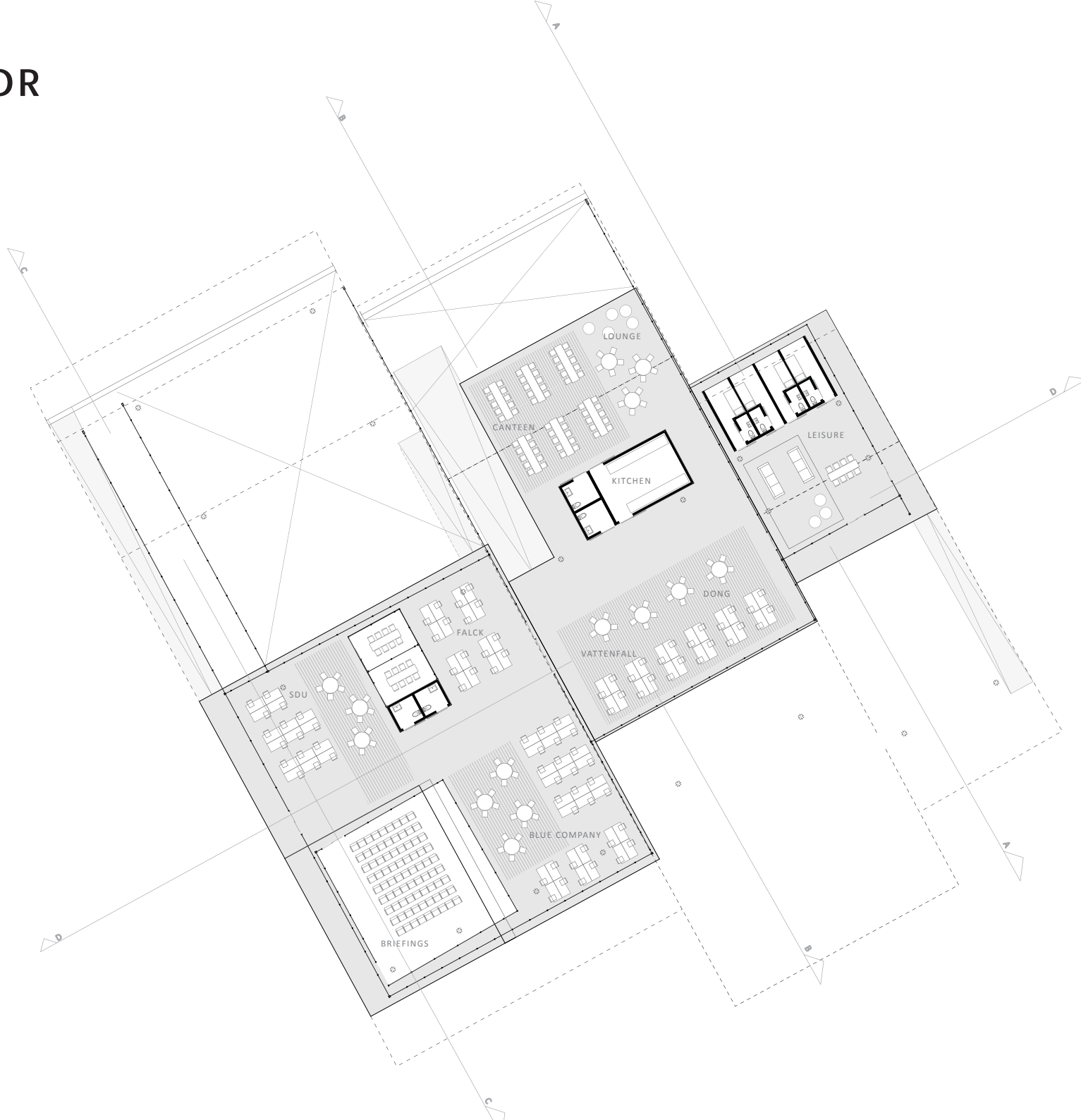


GROUND FLOOR





FIRST FLOOR



modelfoto af kontorlandskab med auditorium

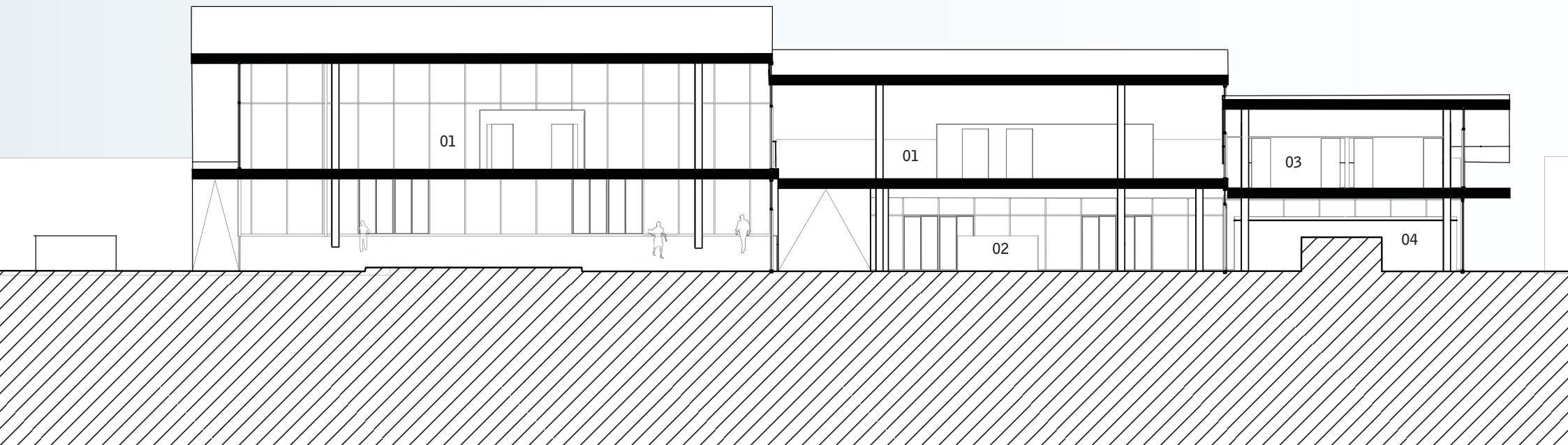
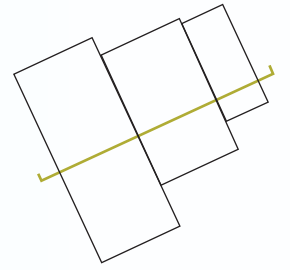
_ spaces flow into each other

_ transitional

_ three surfaces - one landscape

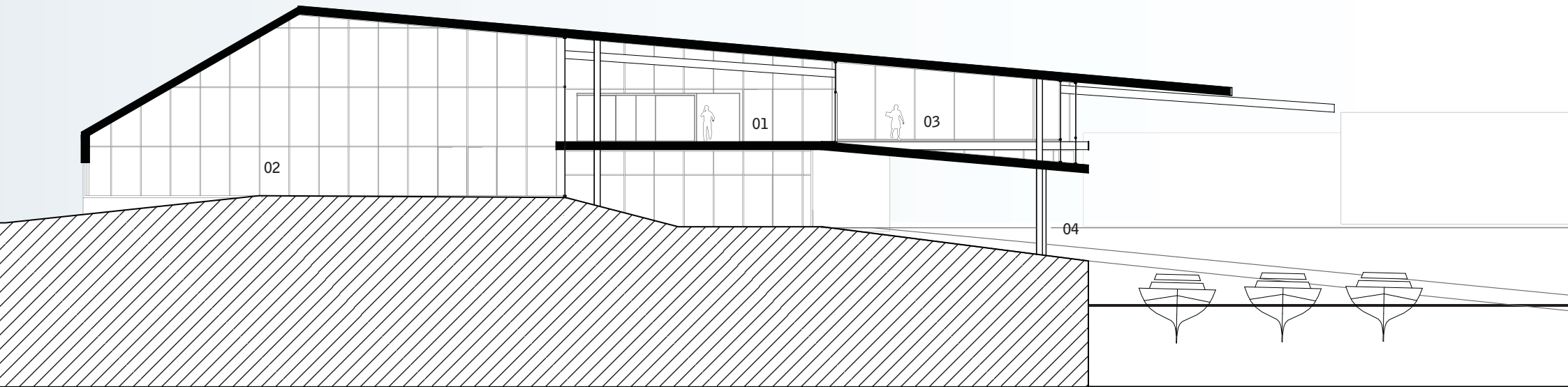
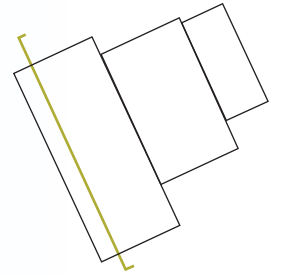
SECTION D-D

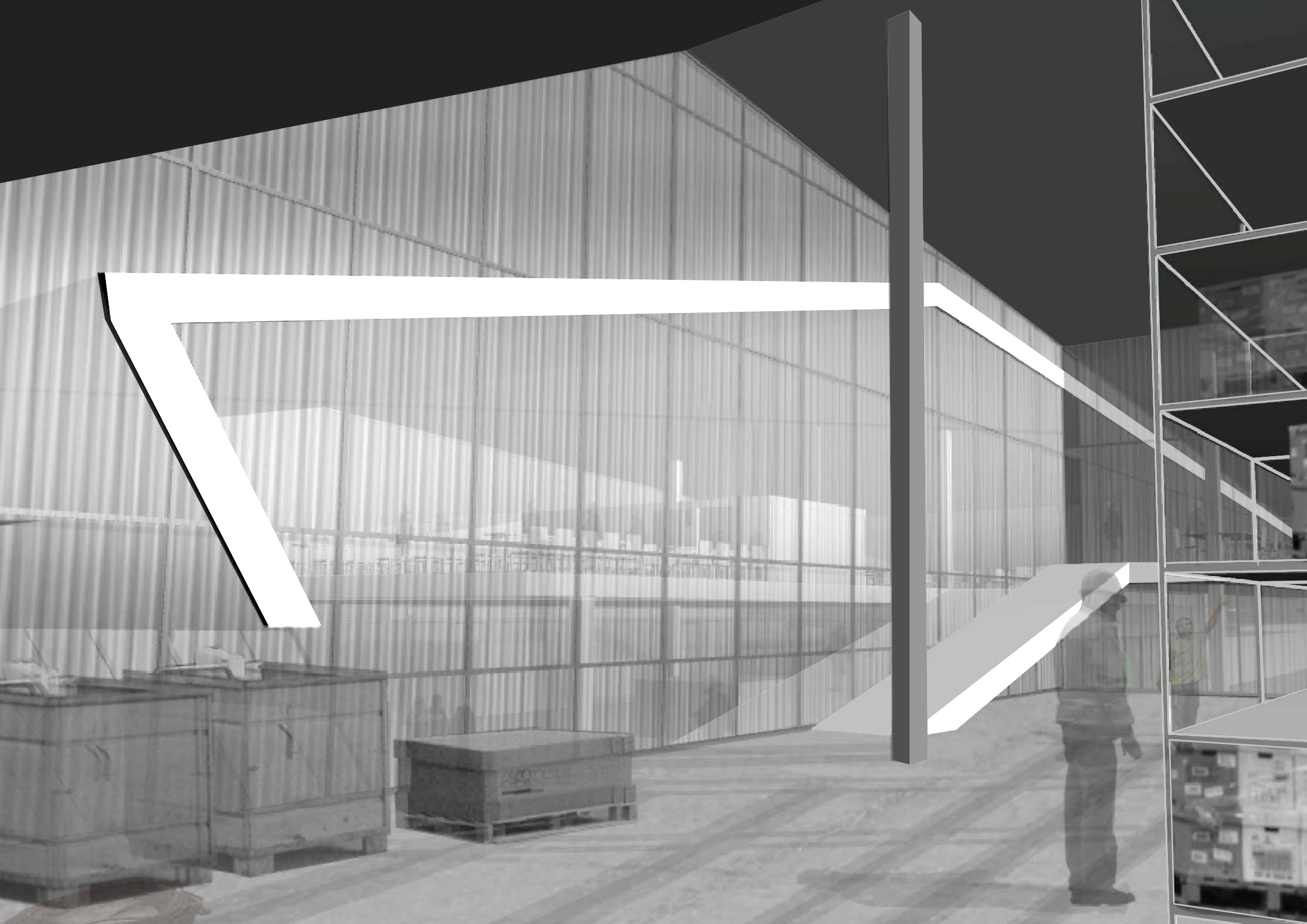
- 01_ office space
- 02_ exhibition
- 03_ leisure
- 04_ metal workshop



SECTION A-A

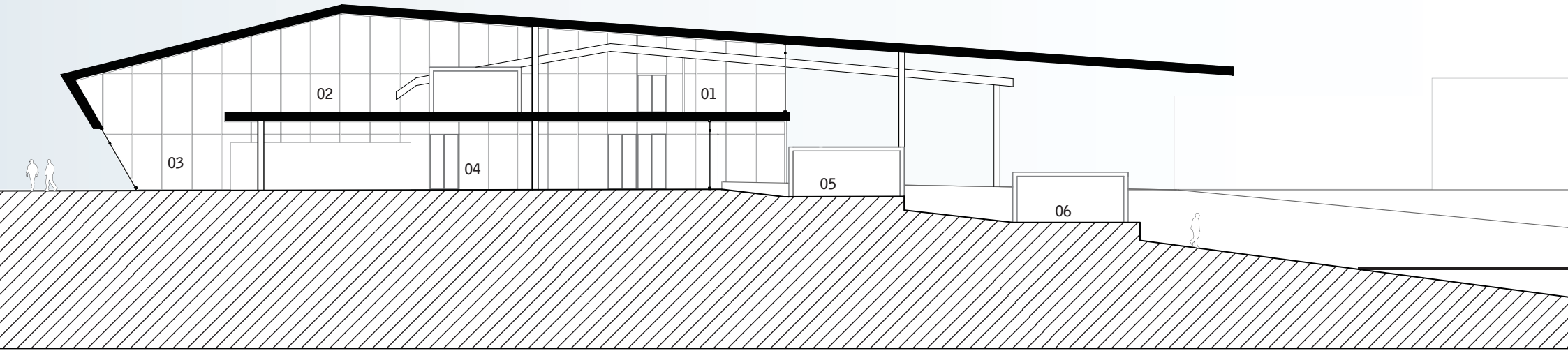
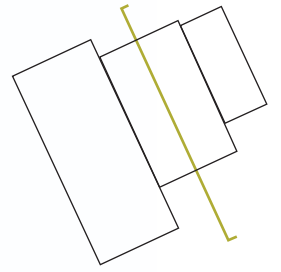
- 01_ office space
- 02_ storage
- 03_ auditorium
- 04_ loading of vessels





SECTION B-B

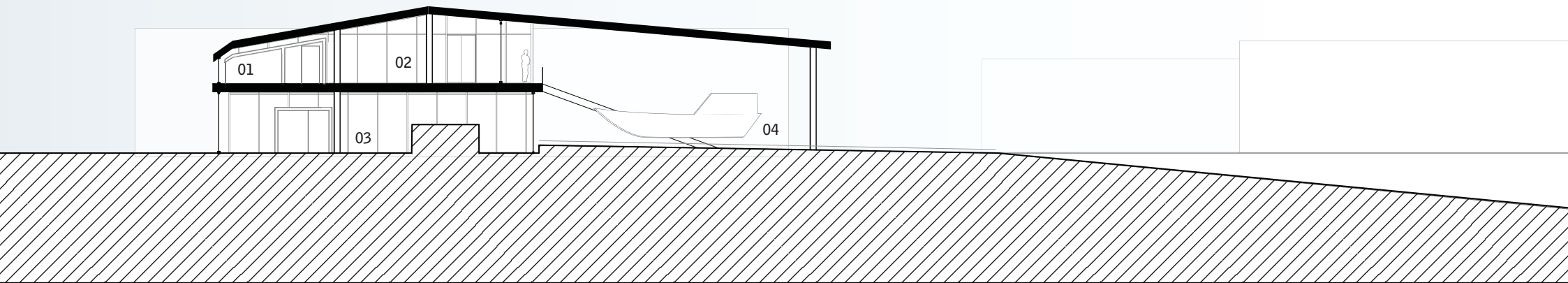
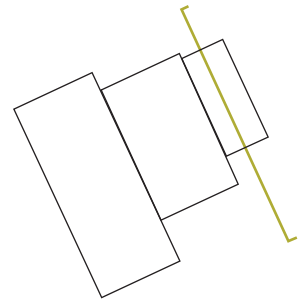
- 01_ office space
- 02_ canteen
- 03_ entrance
- 04_ exhibition
- 05_ changing
- 06_ briefing



modelfoto af slipwayarealet
_udendørs envelopes
_moduleret facade imod vandet
_exterior colums; breakdown of volume.

SECTION C-C

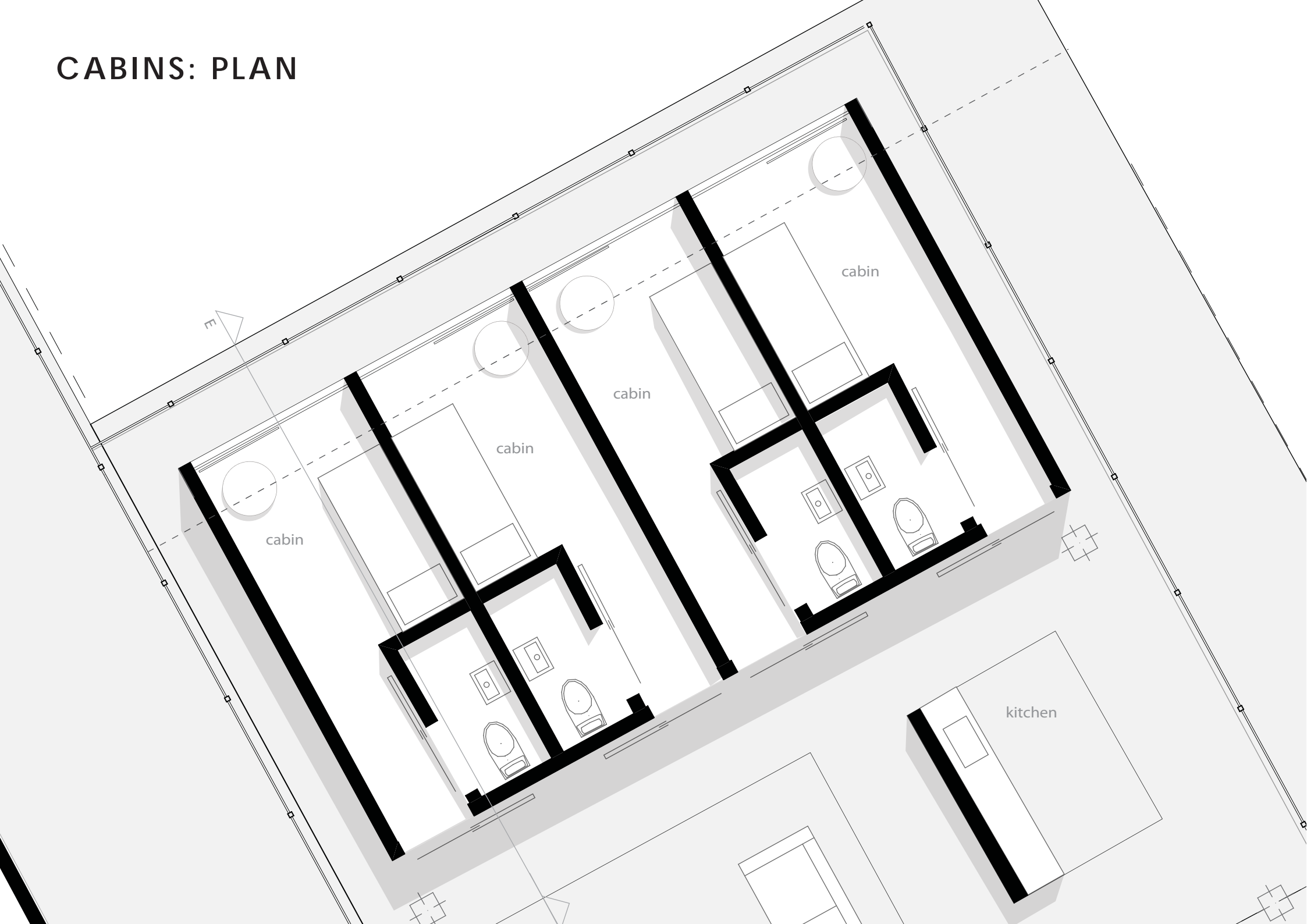
- 01_cabin
- 02_leisure
- 03_metal workshop
- 04_maintenance



CABINS: SECTION E-E



CABINS: PLAN





ELEVATIONS: NORTH + SOUTH



ELEVATIONS: EAST + WEST

