

\_ PRESENTATION

# **ESBJERG OFFSHORE WIND CENTRE**

an investigation of the building landscape

\_ NICOLA STEWART LAURSEN-SCHMIDT

## CONTEXT

\_ The site is at the centre of a transitional zone; wedged in between the naturally occurring landscape and the industrial harbour.

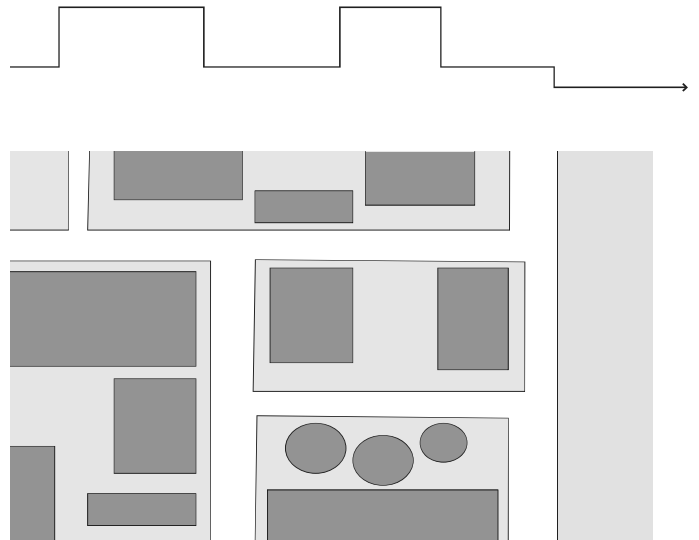
\_ The slipway marks the only place in the harbour, where the meeting of water and land is a gradual one.



## HARBOUR: LANDSCAPE OF PLANES

\_ Both at eye-level and in plan, the harbour area is perceived as a system of orthogonal surfaces.

\_ The large scale of the facades and open spaces, together with their blank appearance, makes them appear as a single orthogonal surface.



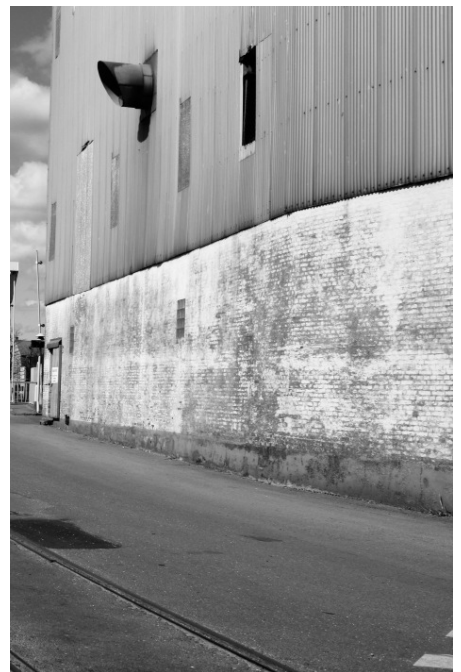
## HARBOUR: THE PROBLEM OF SCALE



LACK OF TRANSPARENCY:  
The closed facades of the harbour buildings reveal nothing about the activities inside.



STRANGE DETAILS:  
The harbour is designed for machines. Mainly the details are mechanical installations; reveal nothing about a human presence.



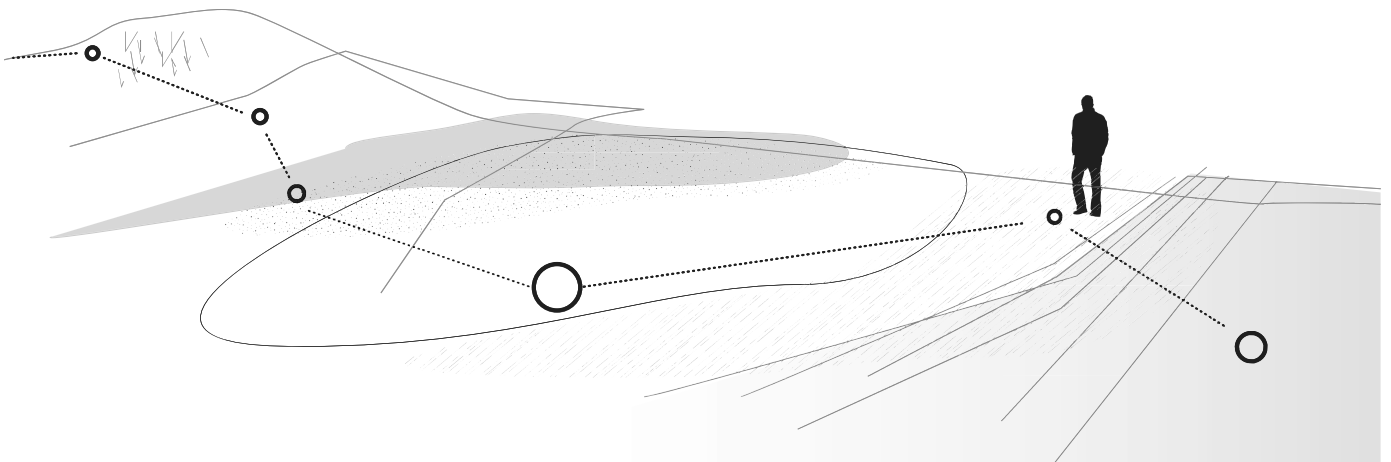
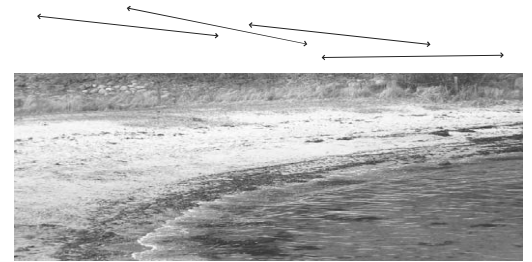
NO GESTURES  
at a human level, making you feel welcome and comfortable in this area.

## NATURE: LANDSCAPE OF PLANES

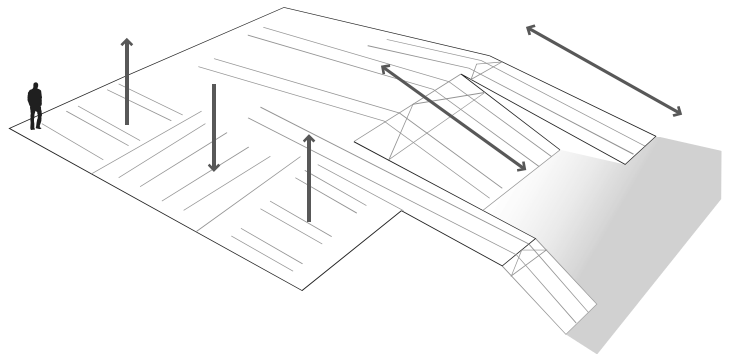
\_ The natural landscape is made up of gradually overlapping surfaces.

\_ The overlapping surfaces created overlapping spaces. You move freely in the landscape, hardly noticing the changes.

\_ The notion of transitional spaces, overlapping and gradually changing, can be applied to building.



## SITE: FUNCTIONAL SURFACE



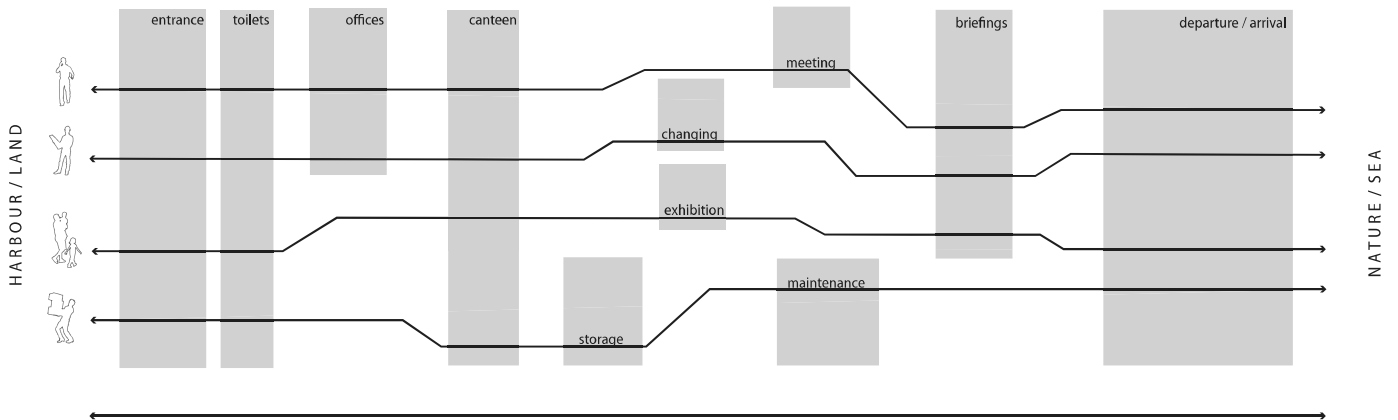
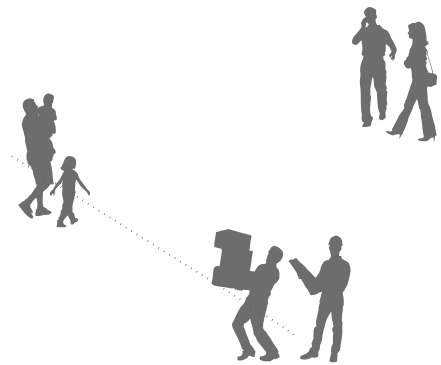
\_ The surface landscape of the site has been designed purely on the basis of the functional requirements.

\_ Like nature and the harbour, the site is read as a single surface landscape.

# FUNCTIONAL BRIEF

\_ The building is a transitional space, with the primary function of providing a direct connection from land to sea.

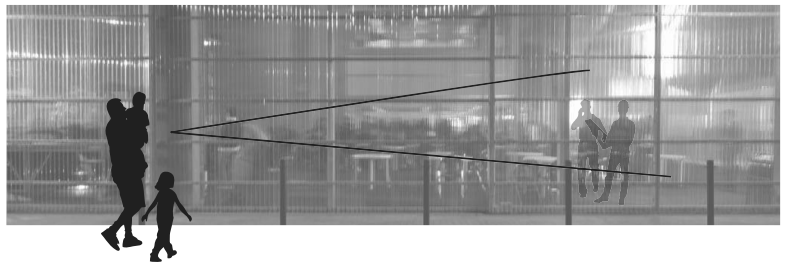
\_ Different user groups share functions when possible; interaction is encouraged.



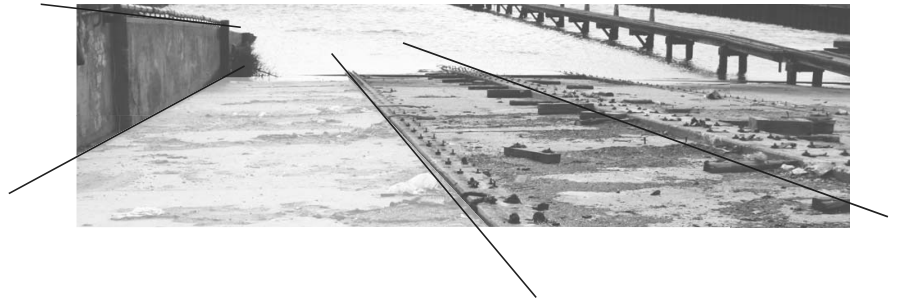
## AMBITIONS

### \_ CHALLENGE HARBOUR TYPOLOGY

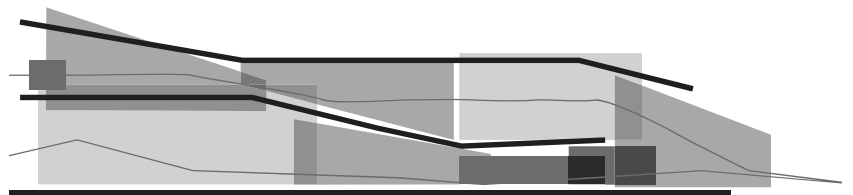
- \_ by revealing more of the interior activities
- \_ making gestures towards a human scale
- \_ keeping true to the size of neighboring buildings.



### \_ FACILITATE AND COMMUNICATE THE TRANSITIONAL NATURE OF THE SITE by continuing the narrative of the landscapes of context and site.



### \_ NATURAL PROGRESSION THROUGH SPACES Ensuring a gradual transition through spaces of different sizes and scales: small cabins are naturally integrated as storage space.

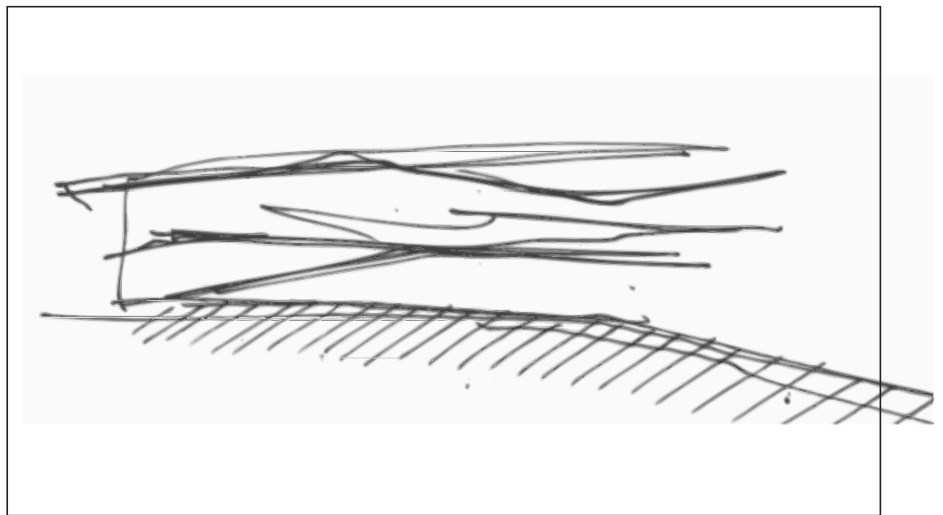




## CONCEPT

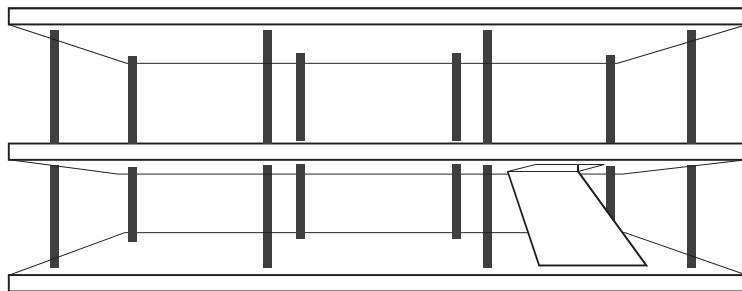
\_ The concept for the building is to carry on the notion of the surface landscape; as found in the context and on site.

The spaces of the building will be formed by the interaction of surfaces, forming a building landscape.



## FORM PRINCIPLES

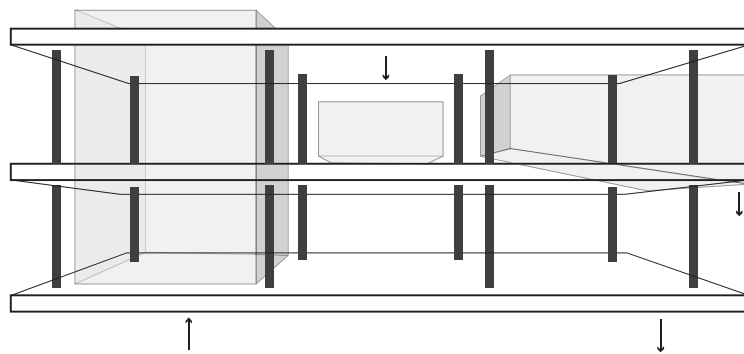
- new LeCorbusier principles
- 01\_ DOMINO HOUSE-PRINCIPLE
- \_ Generic space
- \_ Any function can be placed anywhere
- \_ Flexible + multifunctional



## FORM PRINCIPLES

### 02\_ INTERFERING FUNCTIONS

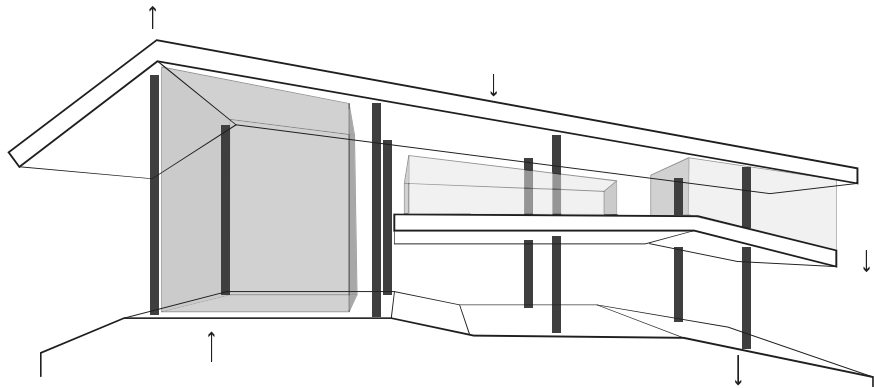
\_ the functional/spacial/atmospheric requirements of certain spaces do not fit into generic structure.



## FORM PRINCIPLES

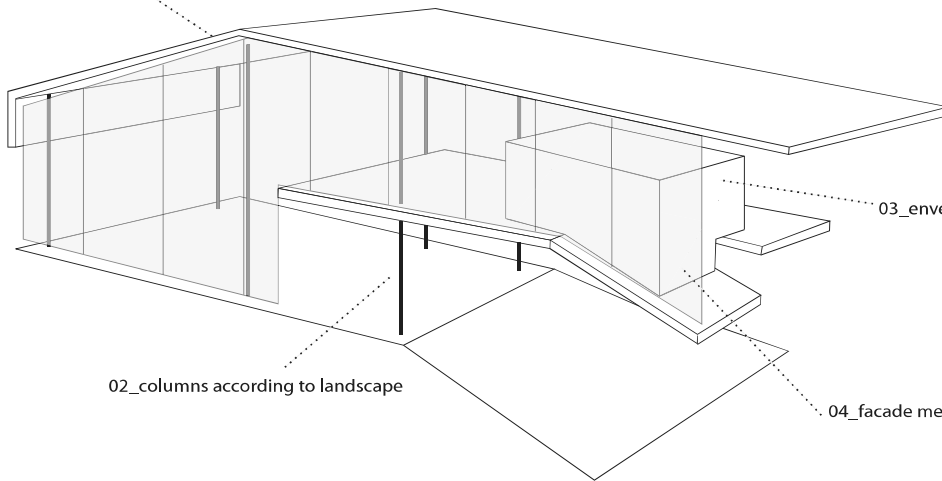
### 03\_ BUILDING LANDSCAPE

- \_ Specific spaces created
- \_ Changing landscape
- \_ Flexible + multifunctional
- \_ Inspiring + challenging



# HIERARCHY

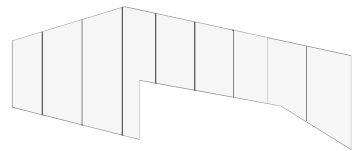
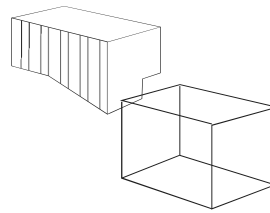
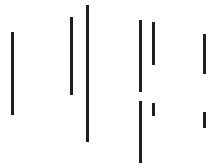
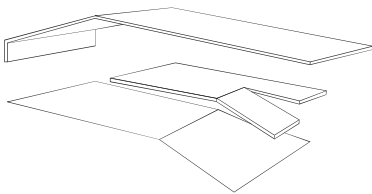
01\_building landscape



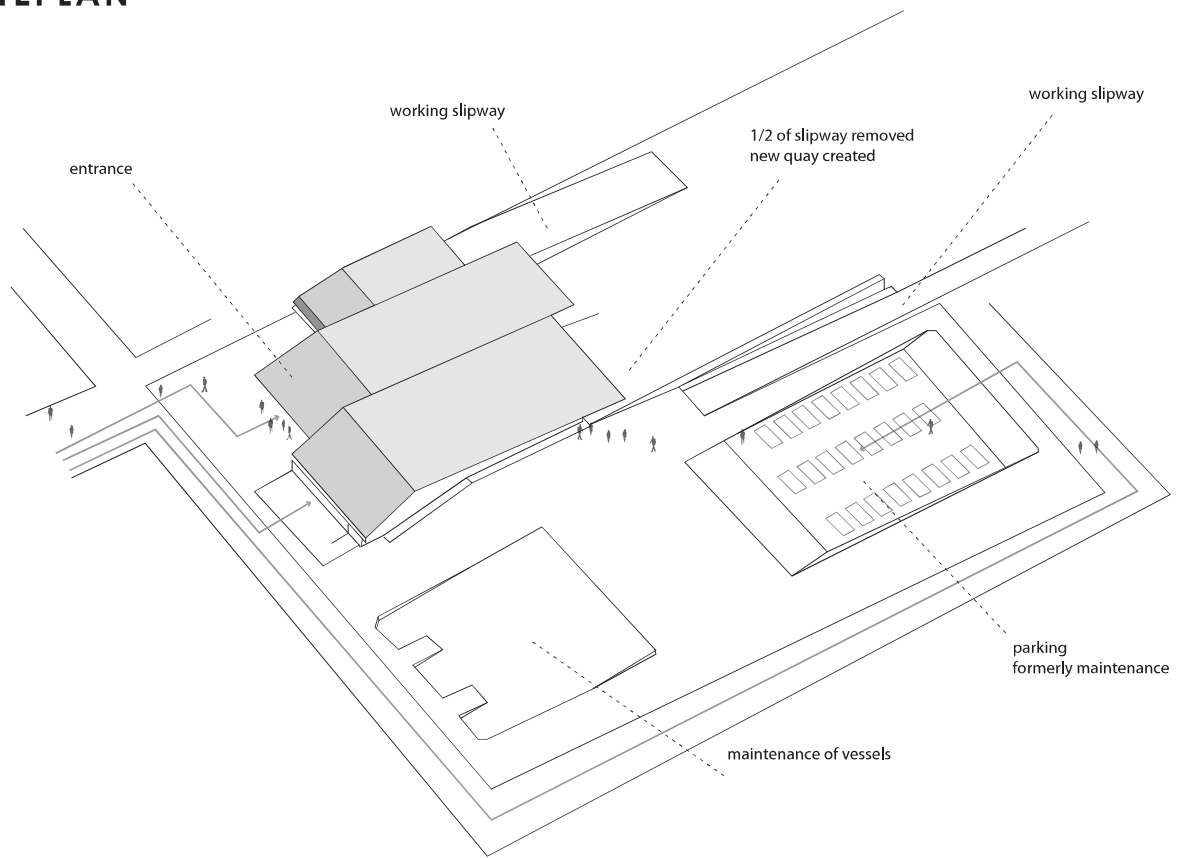
03\_envelopes

02\_columns according to landscape

04\_facade membrane

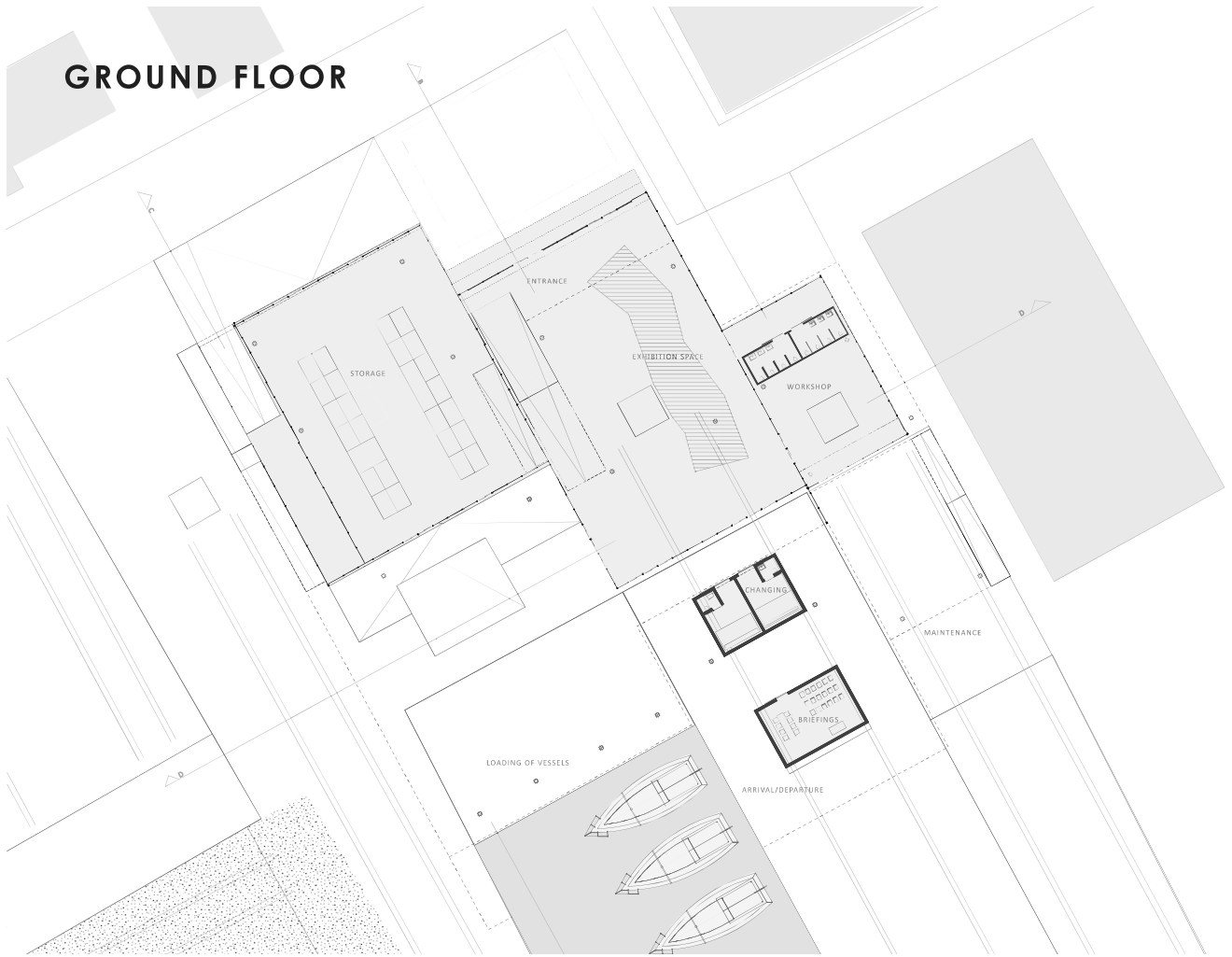


# SITEPLAN





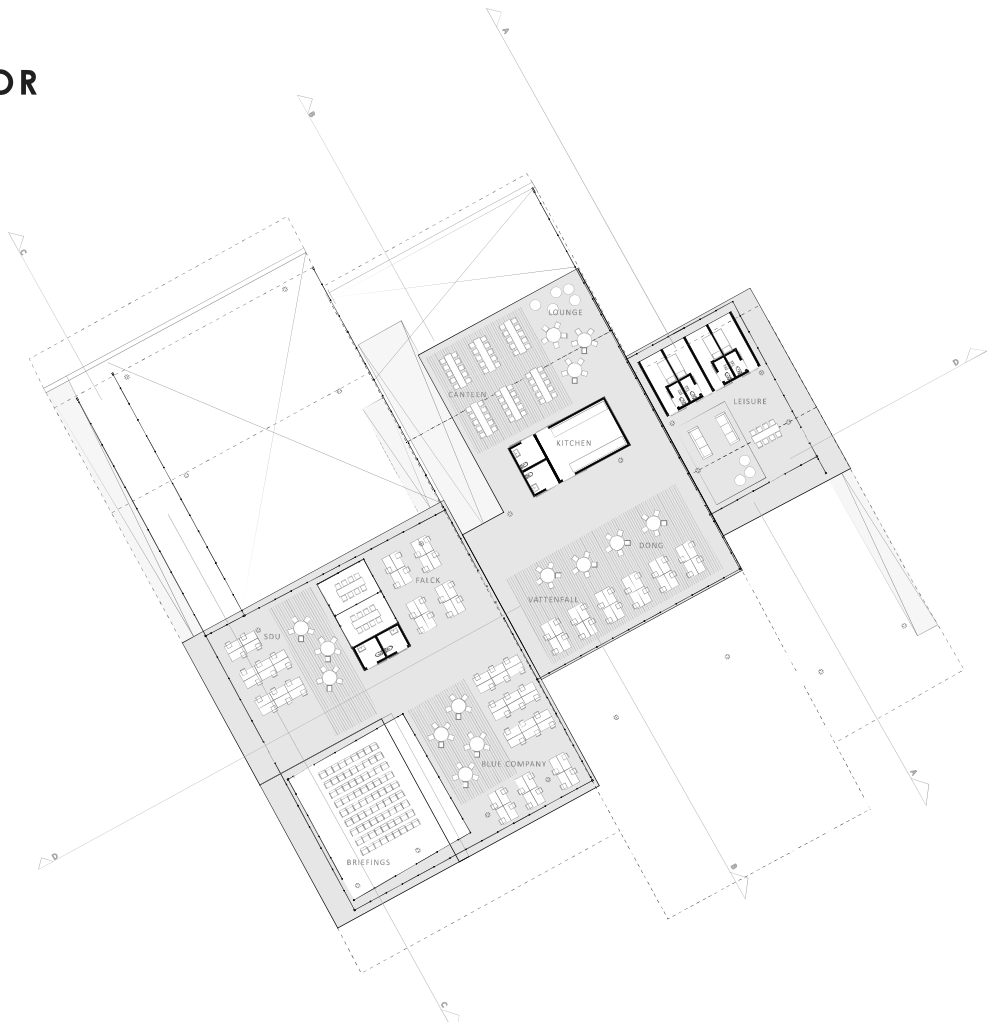
# GROUND FLOOR





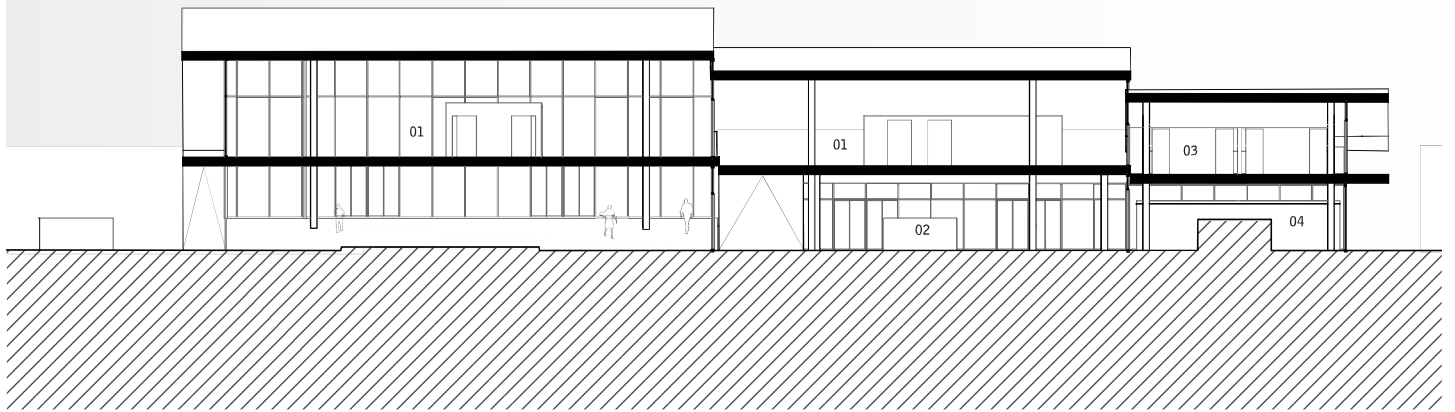
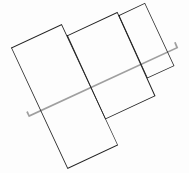


# FIRST FLOOR



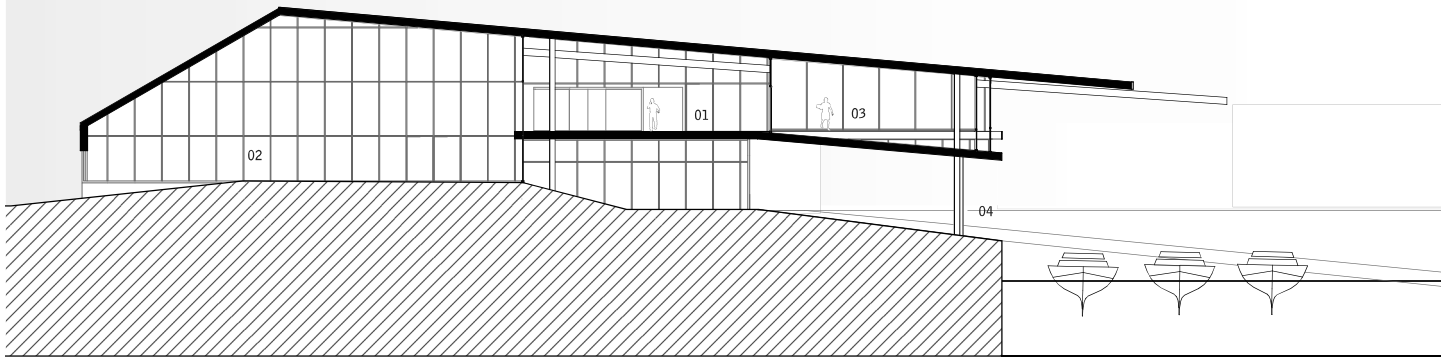
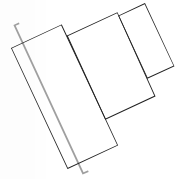
## SECTION D-D

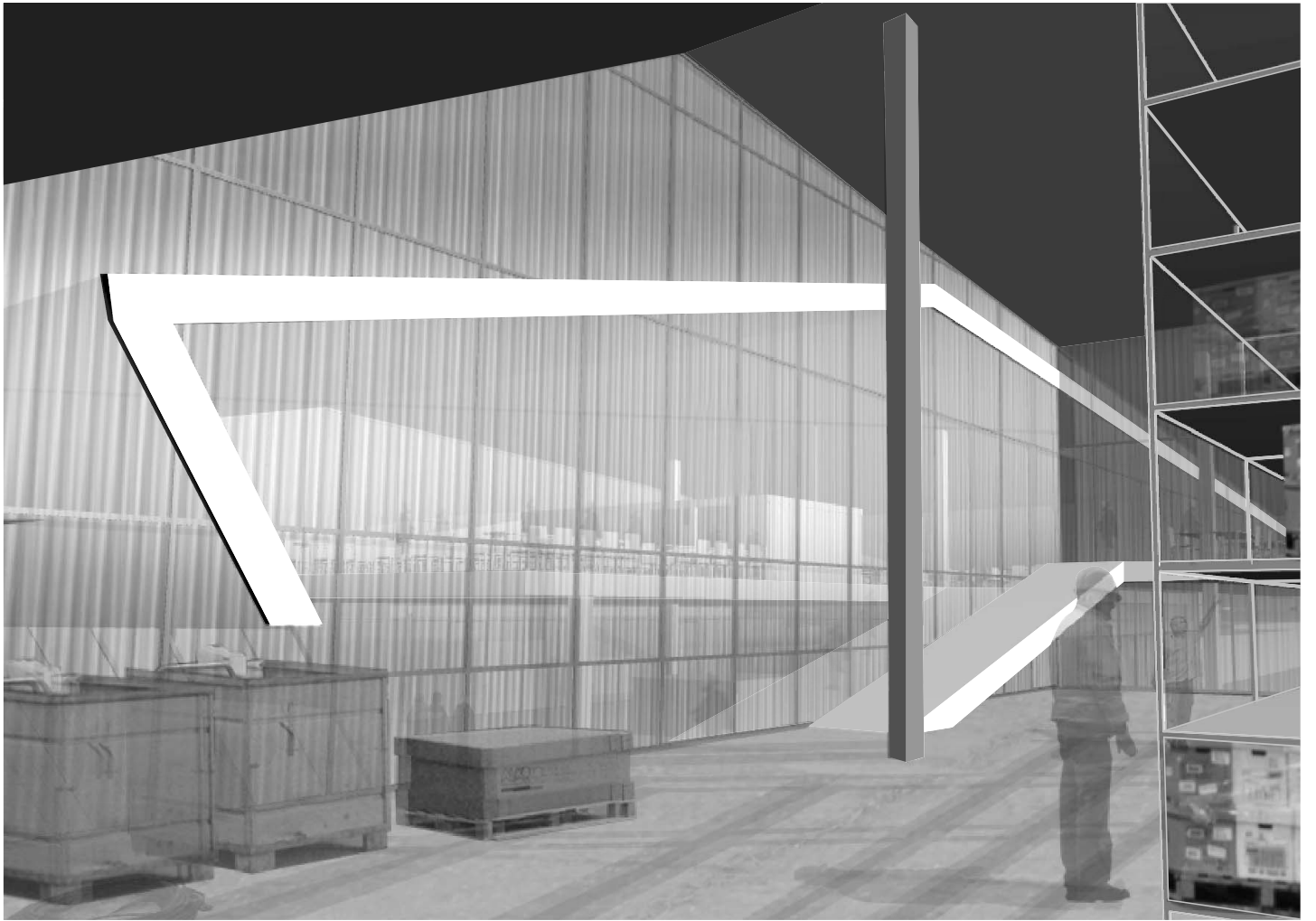
- 01\_ office space
- 02\_ exhibition
- 03\_ leisure
- 04\_ metal workshop



## SECTION A-A

- 01\_ office space
- 02\_ storage
- 03\_ auditorium
- 04\_ loading of vessels





## SECTION B-B

- 01\_ office space
- 02\_ canteen
- 03\_ entrance
- 04\_ exhibition
- 05\_ changing
- 06\_ briefing

